

# The Extec C-12<sup>+</sup>



Features and Benefits Book

Welcome to Extec Screens & Crushers - a member of the Sandvik group



# EXTEC C-12<sup>+</sup>



The Extec C12+ offers a unique mix; formidable crushing technology and true mobility in one machine. Expanding from the highly successful C-12, improvements include a new compact chassis, along with the powerful CAT C-9 engine. Aiding in the processing of concrete, an over band magnet ensures the removal of any reinforcing bar during crushing, while the large 1200 x 750 mm feed opening allows the jaws to give very high production with minimal bottle necking of crushing.

The newly designated **C12+** is the result of Extec's unrivalled R&D programme, and encompasses features designed to further enhance the profitability of the user at its core.

Applications include:

- Granite, slate, bricks, Limestone, Recycling and demolition
- Rock crushing in quarries
- Concrete crushing in recycling yards, demolition sites or construction sites
- Asphalt crushing

The following features document includes:

- Key features of Extec C-12+
- C-12+ Technical Specification
- Product features
- Application photographs
- Transport & Working drawings





**Extec C12<sup>+</sup>**

### Key features of the Extec C12<sup>+</sup>

- Unique high crushing speed
- Reverse crushing action to relieve blockages
- Excellent Product size reduction
- Extended main conveyor as standard
- CAT C-9 diesel engine
- Vogel central Lubrication



## C12+ Technical Specification

Feed opening	1200 x 750mm	(48" x 28")
Crusher speed	300rpm	
Drive	Hydraulic	
Hopper width	2751mm	(9')
Feeder width	1100mm	(3' 6")
Feeder length	4000mm	(13' 1")
Transport length	14646mm	(48')
Transport length bogie	15383mm	(49' 5")
Transport width	2756mm	(9')
Transport height	3429mm	(11' 2")
Transport height Bogie	3838mm	(12' 6")
Working Length	15750mm	(51' 8")
Working Width	4108mm	(13' 5")
Working height	4063mm	(13' 3")
Engine	Cat C-9 – 261 kw / 350 hp	
Weight	46.38 Tonnes	(105,280lbs)





Jaws - Powerful Jaws able to crush even the toughest rock products



Large gap between discharge point of crusher and conveyor eliminates blockages and facilitates cleaning.



Large vibrating feeder with grizzly – flow of materials can be co-ordinated between the grizzly and jaw



Maintenance platforms are provided on the right hand side of the crusher





Extended main conveyor- no need for ramps for onward machine feeding and stock piles



Side conveyor- collects fines passing through grizzly bars.

Optional extended side conveyor available



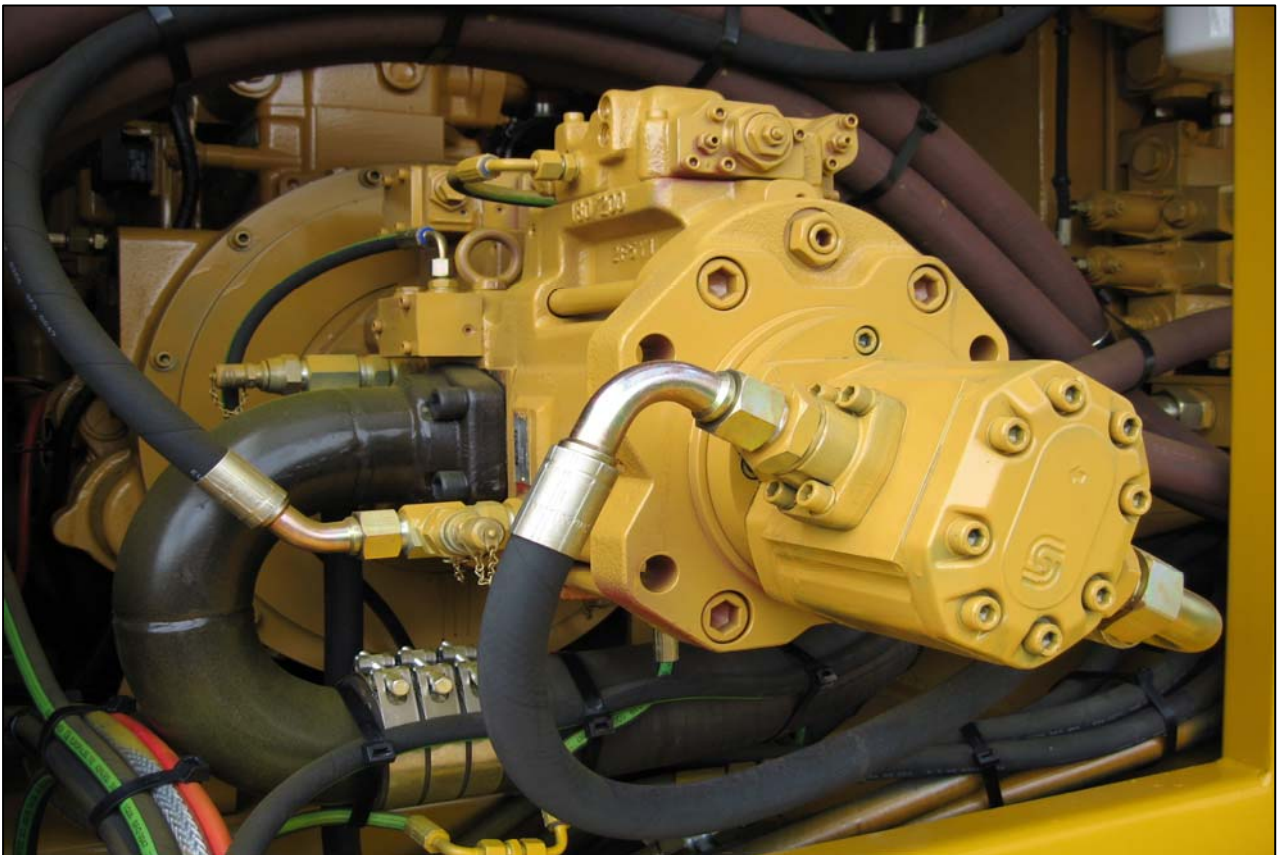
### Features and Benefits Book

Welcome to Extec Screens & Crushers - a member of the Sandvik group





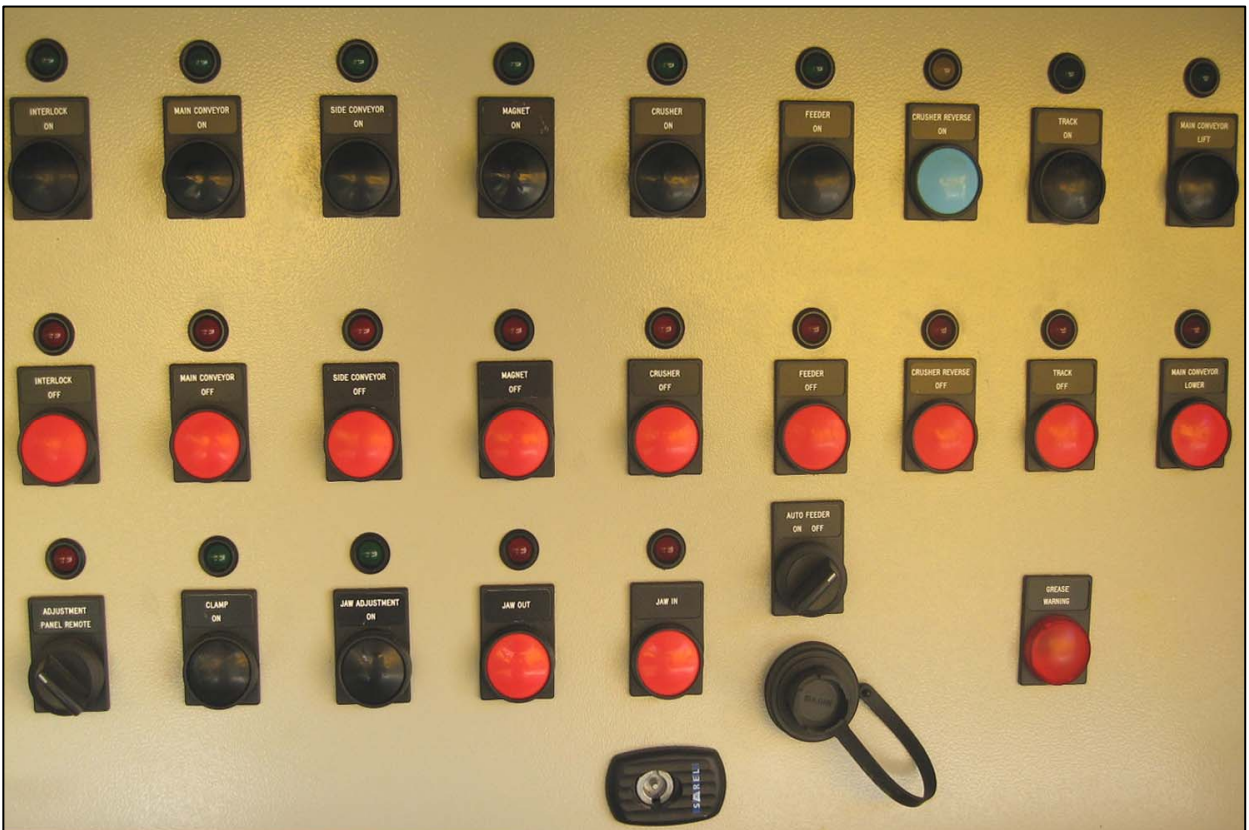
Caterpillar C-9 Powerpack- easy access for maintenance and service

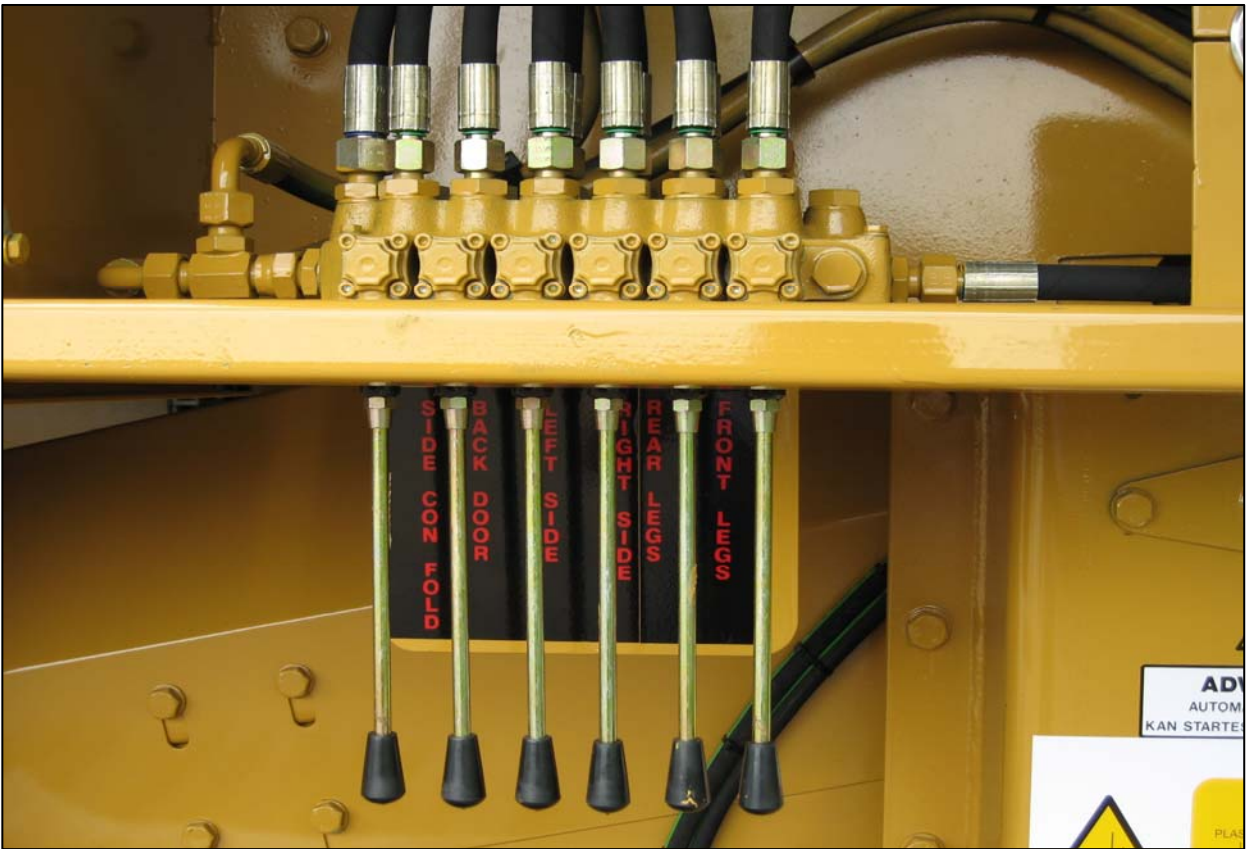






Control box- easy adjustments at the touch of a button





User-friendly conveyor and hopper controls

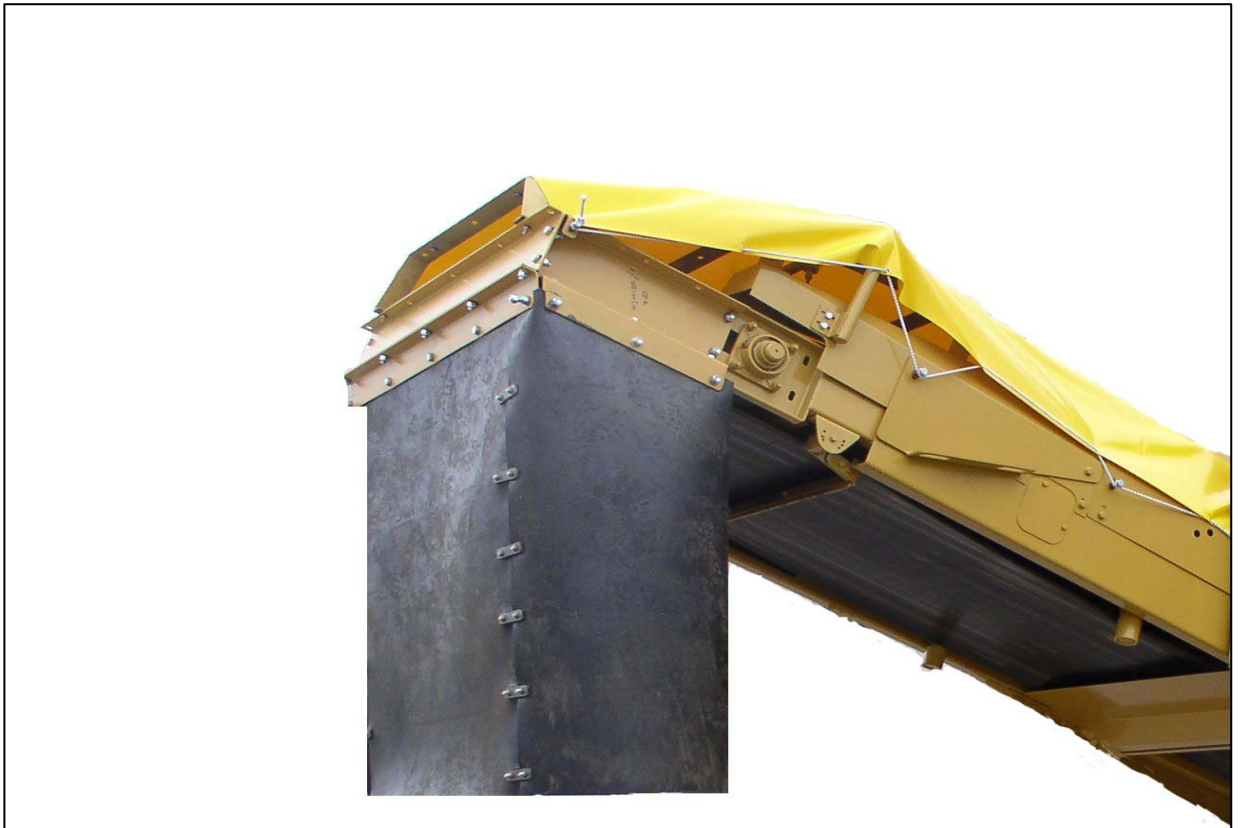


Extended main conveyor control





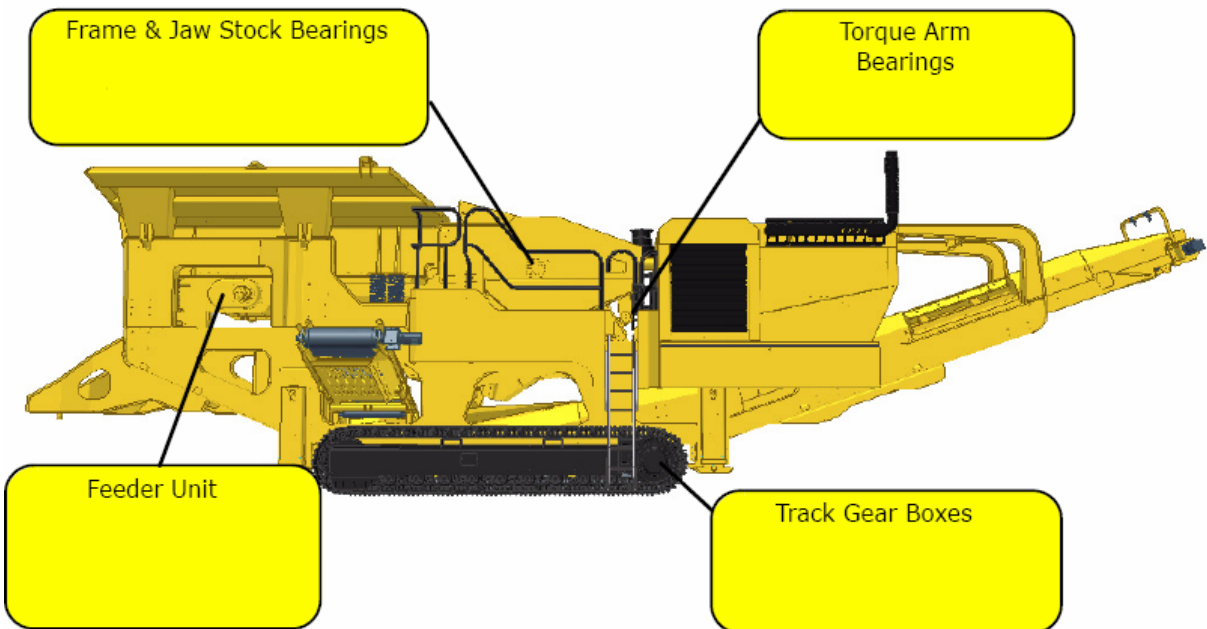
Magnetic separator



Optional dust covers



SKF automatic lubrication – reduced wear and downtime



3: Grease Points





Optional peck arm





Optional bogie system – eliminates the need for low loader



Machine raises on its hydraulic legs to facilitate cleaning and servicing of tracks





New Heavy Steel, Web and Flange Frame Construction







Construction & demolition application



Huge Stockpiling capabilities



## Features and Benefits Book

Welcome to Extec Screens & Crushers - a member of the Sandvik group







Granite application







Limestone quarry application







Demolition recycling application



Waste recycling application





Quarrying applications in the UK

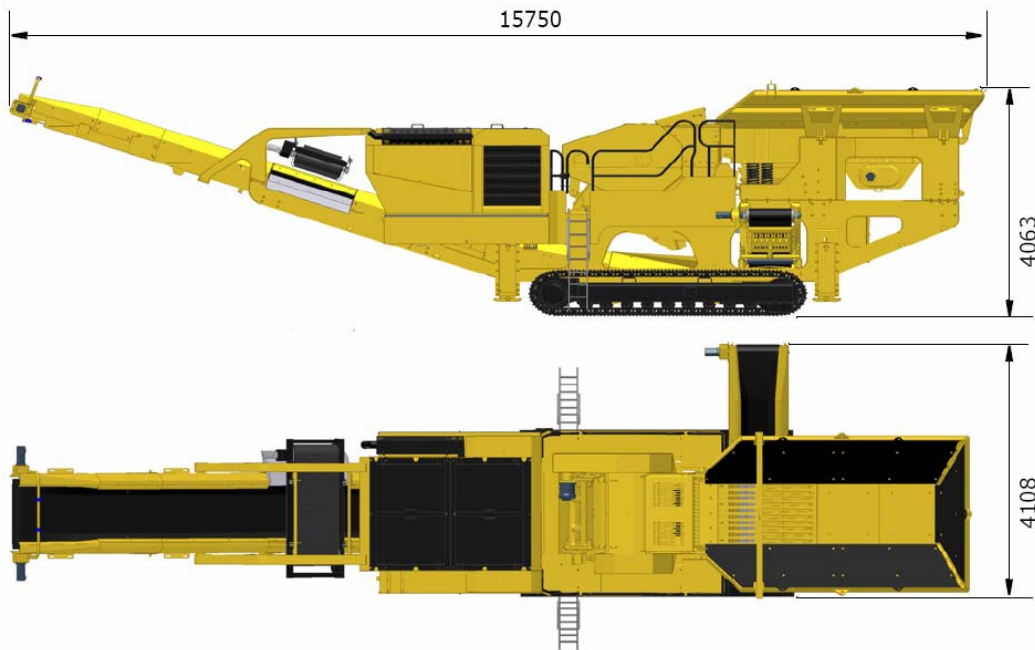
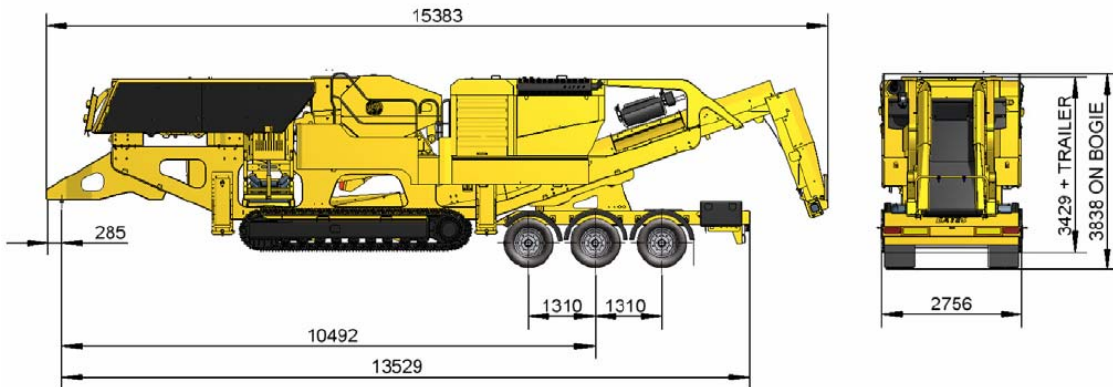






## C-12+ Transport and Working Drawings

### C12<sup>+</sup> Transport (bogie)



### C12<sup>+</sup> Working